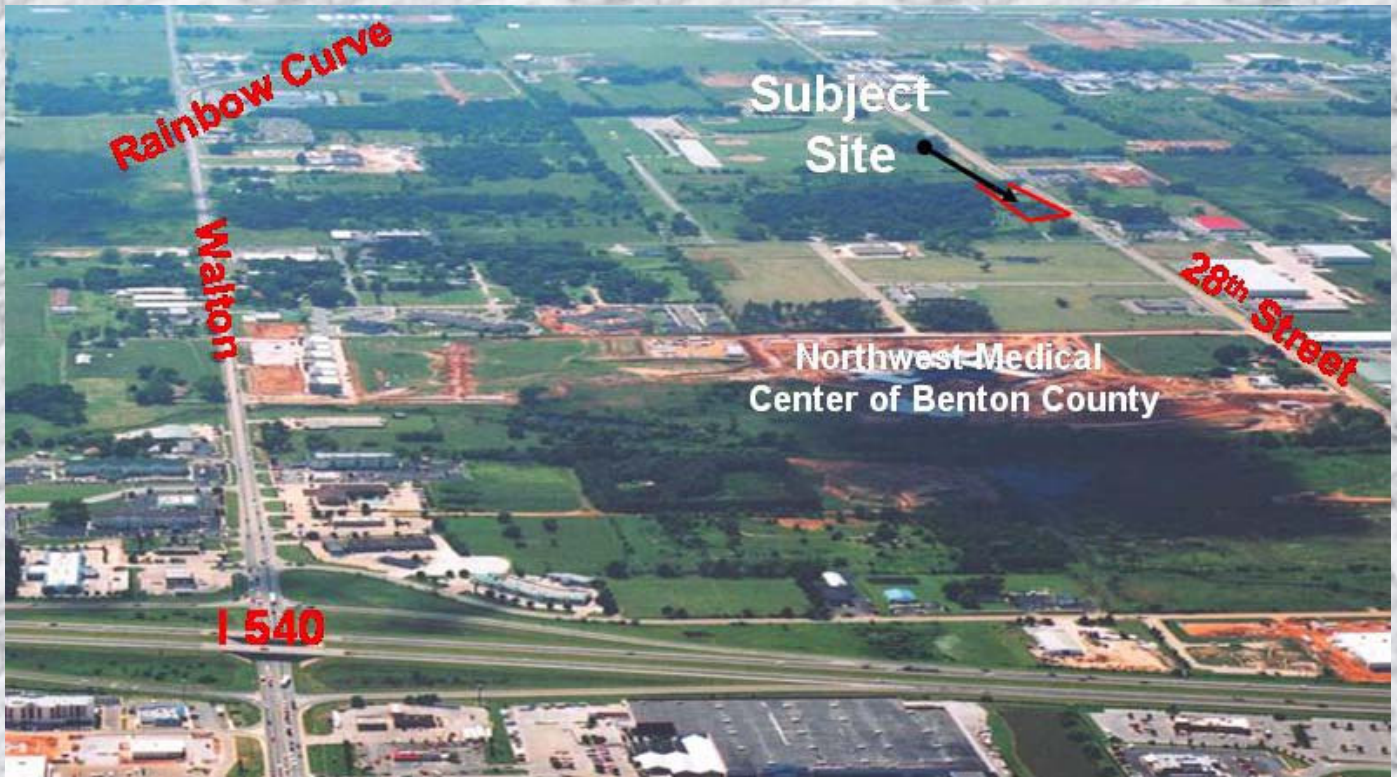


\$7.00 Per SF

FOR SALE

**4.76+/-AC, 28th Street
Bentonville**



- Great Commercial Lot
- Zoned C-1
- 650' frontage on 28th Street
- 1,760+/-SF house on property, currently being leased
- Property in rapidly growing area with a high traffic count



Bill McClard, CCIM, SIOR
Lindsey & Associates, Inc.
Commercial/Industrial Division
3801 W. Walnut

Rogers, Arkansas 72756
(479) 246-1670 or 800-658-4012 Ext. 670

Website: www.BillMcClard.com



All information contained herein given by sources deemed reliable. We do not however guarantee its accuracy.

