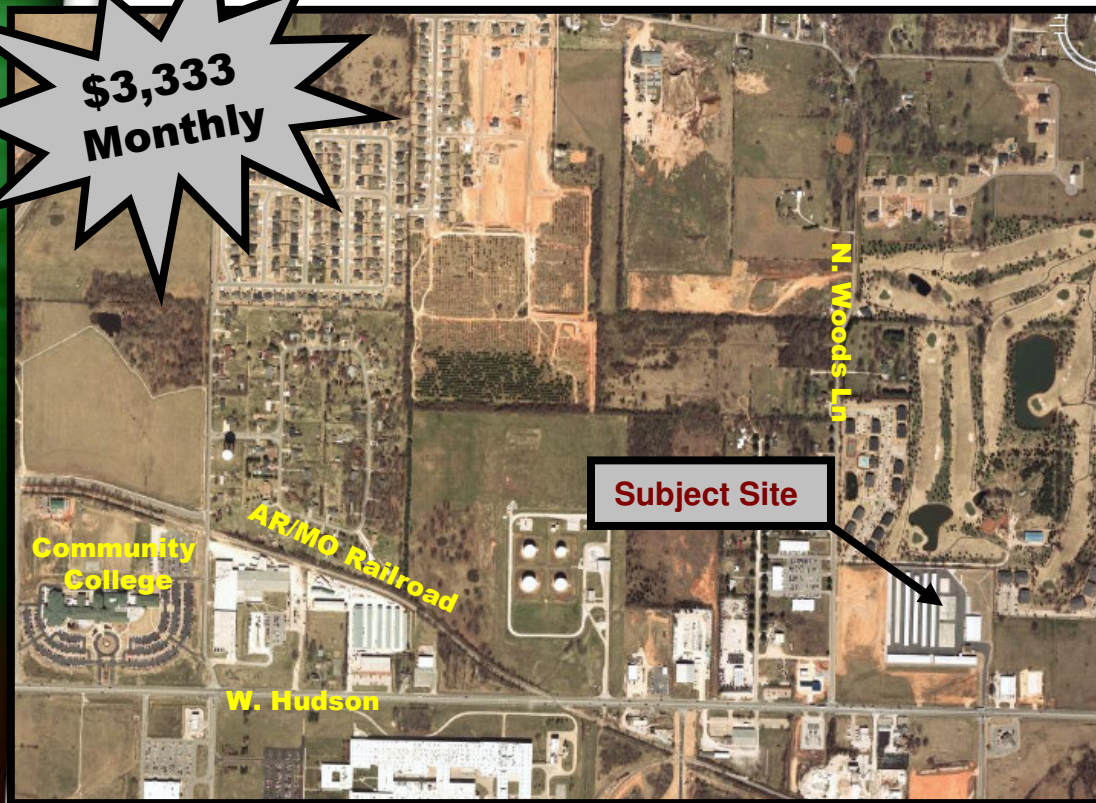


# FOR LEASE 2600 N. 24<sup>th</sup>, Rogers, AR

**\$3,333  
Monthly**



## Features

- ❖ 16,000 +/- SF warehouse
- ❖ Priced at \$2.50 per SF
- ❖ Zoned I-1
- ❖ All city utilities
- ❖ Located in a secure area
- ❖ 12' Sidewalls
- ❖ Located 1 1/2 miles from I-540
- ❖ Overhead doors can be added (additional cost)

**ML#490313**

**Directions:** From intersection of Hwy 102 (Hudson) and 24<sup>th</sup> Street, turn north to A.J. Storage, bldg. Located in storage warehouse area.

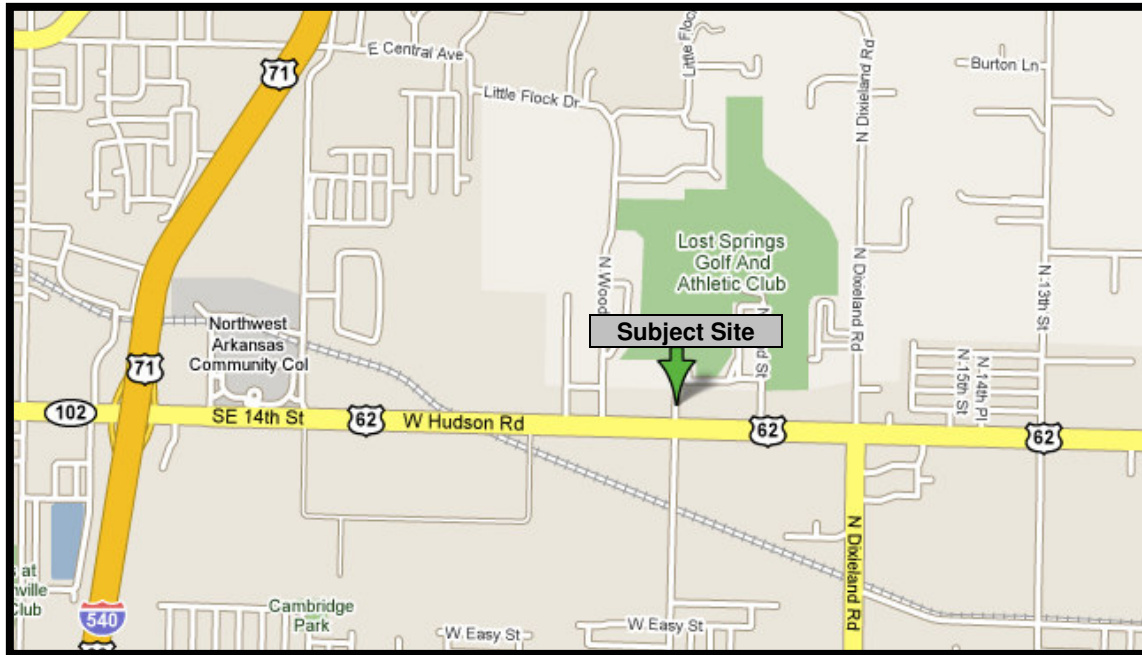


**Bill McClard, CCIM, SIOR**  
**Lindsey & Associates, Inc.**  
**Commercial/Industrial Division**  
**3801 W. Walnut**  
**Rogers, Arkansas 72756**  
**(479) 246-1670 or 800-658-4012 Ext. 670**  
**Website: [www.BillMcClard.com](http://www.BillMcClard.com)**



All information contained herein given by sources deemed reliable. We do not however guarantee its accuracy.

# Area Map



# Building Layout

