

**FOR
SALE**

**1.88 +/- AC, 3110 SE J St.
Bentonville, AR**

**DEVELOPMENT
OPPORTUNITY**

\$379,000

FEATURES

- **1.88 +/- ACRES**
- **Zoned C-2**
- **\$4.63 per SF (approx.)**
- **All city utilities**
- **97.28' +/- frontage SE J**
- **Level topography**
- **2005 Traffic Ct: 10,700**
- **Booming area**
- **READY TO DEVELOP**



Bill McClard, CCIM, SIOR

*Lindsey & Associates, Inc.
Commercial/Industrial Division
3801 W. Walnut*

*Rogers, Arkansas 72756
(479) 246-1670 or 800-658-4012 Ext. 670
Website: www.BillMcClard.com*

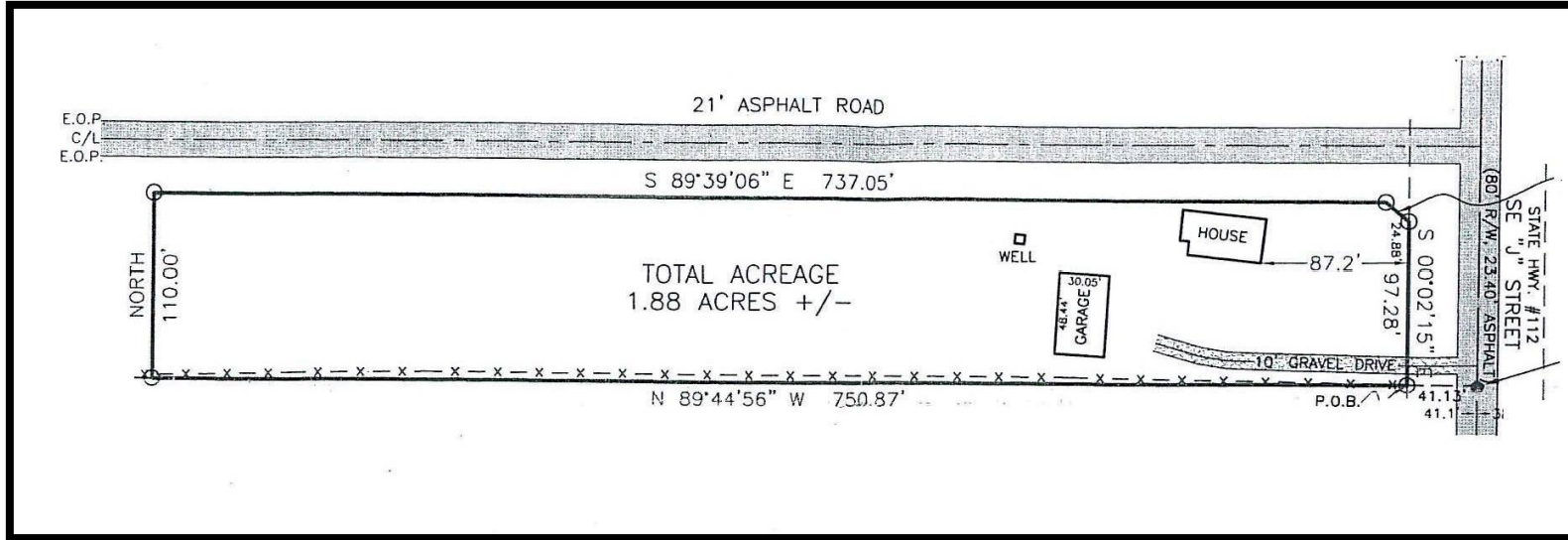


**DIRECTIONS: From I-540, exit 85, go west on
Walton for approx. 1.4 miles, turn north onto
SE J for approx. 2/10 mile property on north side.**

MLX#499653

All information contained herein given by sources deemed reliable. We do not however guarantee its accuracy.

SURVEY MAP



AREA MAP

