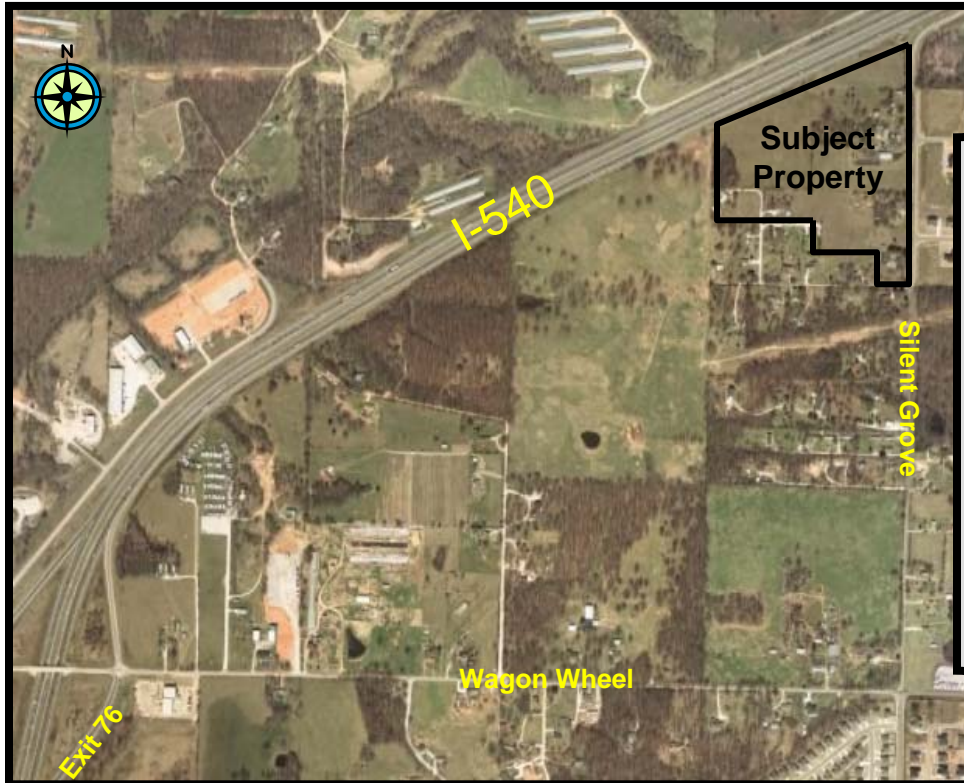


**FOR
SALE**

32.12 +/- ACRES – Silent Grove, Springdale
\$4,827,058

(approx. \$3.45 psf)

**D
E
V
E
L
O
P
M
E
N
T
O
P
P
O
R
T
U
N
I
T
Y**



FEATURES

- 32.12 +/- ACRES
- 1317' +/- frontage/I-540
- 1543' +/- frontage/Silent Grove
- Currently zoned A-1
- 2006 traffic ct: 64,700
(I-540& Wagon Wheel exit)
- Utilities available
- Level topography
- Priced at only \$3.45 psf !!

**Directions: From I-540, Exit 76,
east Wagon Wheel – 1 mile,
north Silent Grove – 1.5 miles,
property on west side.**



Bill McClard, CCIM, SIOR
Lindsey & Associates, Inc.
Commercial/Industrial Division
3801 W. Walnut
Rogers, Arkansas 72756
(479) 246-1670 or 800-658-4012 Ext. 5670
Website: www.BillMcClard.com



MLS# 520888

All information contained herein given by sources deemed reliable. We do not however guarantee its accuracy.

