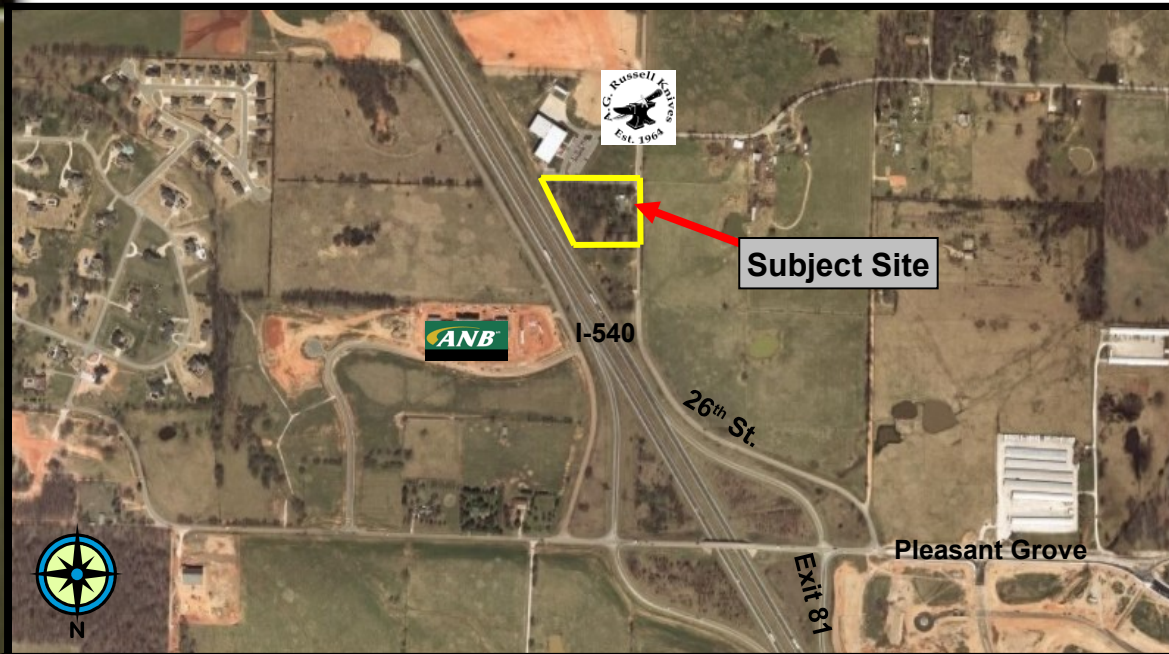


**FOR  
SALE**

2922 S. 26<sup>th</sup> ,Rogers **3.34 +/- AC**

~~\$1,885,000~~ PRICE REDUCED TO:

**\$1,850,000**



- **3.34 +/- ACRES**
- Zoned C-4
- 380' +/- frontage/I-540
- 2009 Traffic Ct: 64,000 (at I-540 / Pleasant Grove)
- Level topography
- Development Opportunity
- Priced at **\$12.72 per SF**



*Hard to find property: ZONED C-4, Development Opportunity !!*

**DIRECTIONS:** I-540 south, Exit 81, east Pleasant Grove - .2 miles, south N. 26<sup>th</sup> St.- .8 miles, property on east side.



**Bill McClard, CCIM, SIOR**  
Lindsey & Associates, Inc.  
Commercial/Industrial Division  
3801 W. Walnut  
Rogers, Arkansas 72756  
(479) 246-1670 or 800-658-4012 Ext. 5670  
Website: [www.BillMcClard.com](http://www.BillMcClard.com)  
Email: [bmcclard@lindsey.com](mailto:bmcclard@lindsey.com)



**CCIM**



# SURVEY



26th Street

# AREA MAP

