

FOR SALE

\$16,204,320

31.21 +/- ACRES: I-540 & Elm Springs Road * Springdale, AR

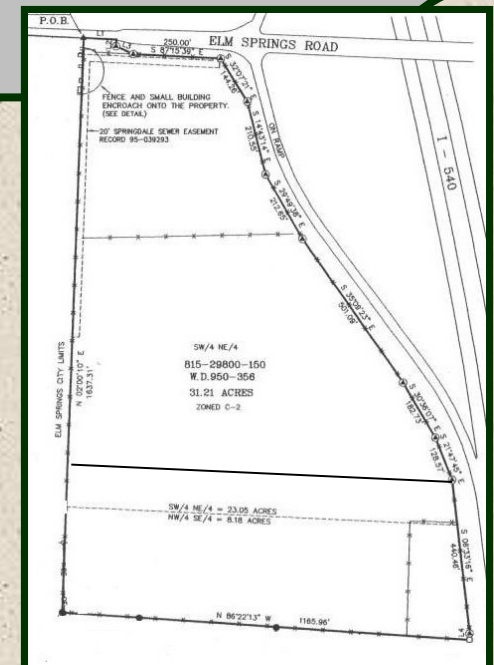
DEVELOPMENT
OPPORTUNITY

FEATURES

- 31.21 +/- Acres
- Zoned C-5
- Approximately \$11.90 SF
- 250' +/- Frontage/Elm Springs Rd
- 440' +/- Frontage /I-540 w/ 1508' +/- Frontage on Exit Ramp
- Topography is Flat
- Ready for Development
- Can Be Divided (see below)
- Water, Sewer and Electric Available
- 48th Street Extension on West Side



LOCATION: S.W. Corner of I-540 Interchange
and Elm Springs Road Exit 73



MLS# 531749

Bill McClard, CCIM, SIOR
Lindsey & Associates, Inc.
Commercial/Industrial Division
3801 W. Walnut
Rogers, Arkansas 72756
(479) 246-1670 or 800-658-4012 Ext. 670
Website: www.BillMcClard.com



All information contained herein given by sources deemed reliable. We do not however guarantee its accuracy.

