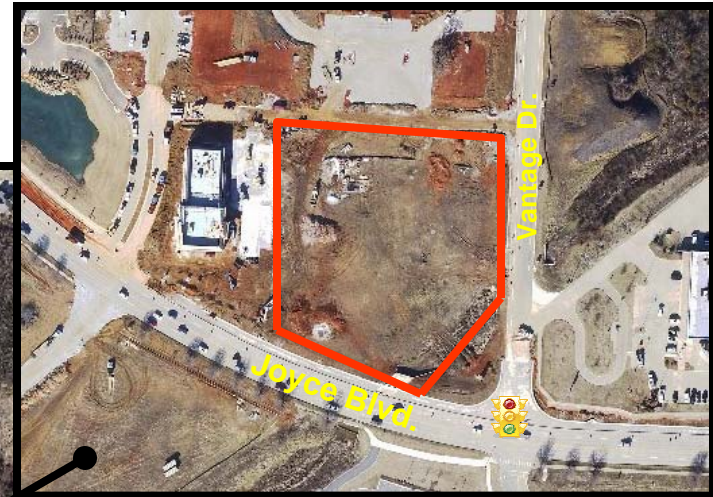


**FOR
SALE**

2.6 +/- ACRES

\$1,931,000

**Joyce Blvd. & Vantage Drive
Fayetteville**



CORNER COMMERCIAL LOT !!

- 2.6 +/- ACRES
- 321.41' +/- frontage / Joyce Blvd.
- 272.76' +/- frontage / Vantage Dr.
- Zoned C-2
- All city utilities
- Corner lot w/ stoplight
- Ready for development
- 2006 Traffic Ct.: 26,400

Located on the northwest corner of
Joyce Blvd. and Vantage Drive.

MLS# 532773



Bill McClard, CCIM, SIOR

*Lindsey & Associates, Inc.
Commercial/Industrial Division
3801 W. Walnut*

Rogers, Arkansas 72756

(479) 246-1670 or 800-658-4012 Ext. 670

Website: www.BillMcClard.com



All information contained herein given by sources deemed reliable. We do not however guarantee its accuracy.

