

**FOR  
SALE**

**40.62 +/- ACRES**  
14959 W HWY 72, GRAVETTE

**\$800,000**



**DIRECTIONS:** From intersection S. Walton/Hwy 72 W – 16.6 miles,  
north onto AR 59 / S. 1<sup>st</sup> Ave. - .2 miles, west AR 72 – 2.7 miles,  
**WATCH FOR SIGNS**

**40.62 +/- ACRES**  
522' +/- Frontage Hwy 72W  
Water provided by City of Centerton  
No sewer  
Electric provided by Carroll Electric  
Level topography  
Development potential

**PRICED AT ONLY  
\$19,695 per ACRE**

**MLS#552852**

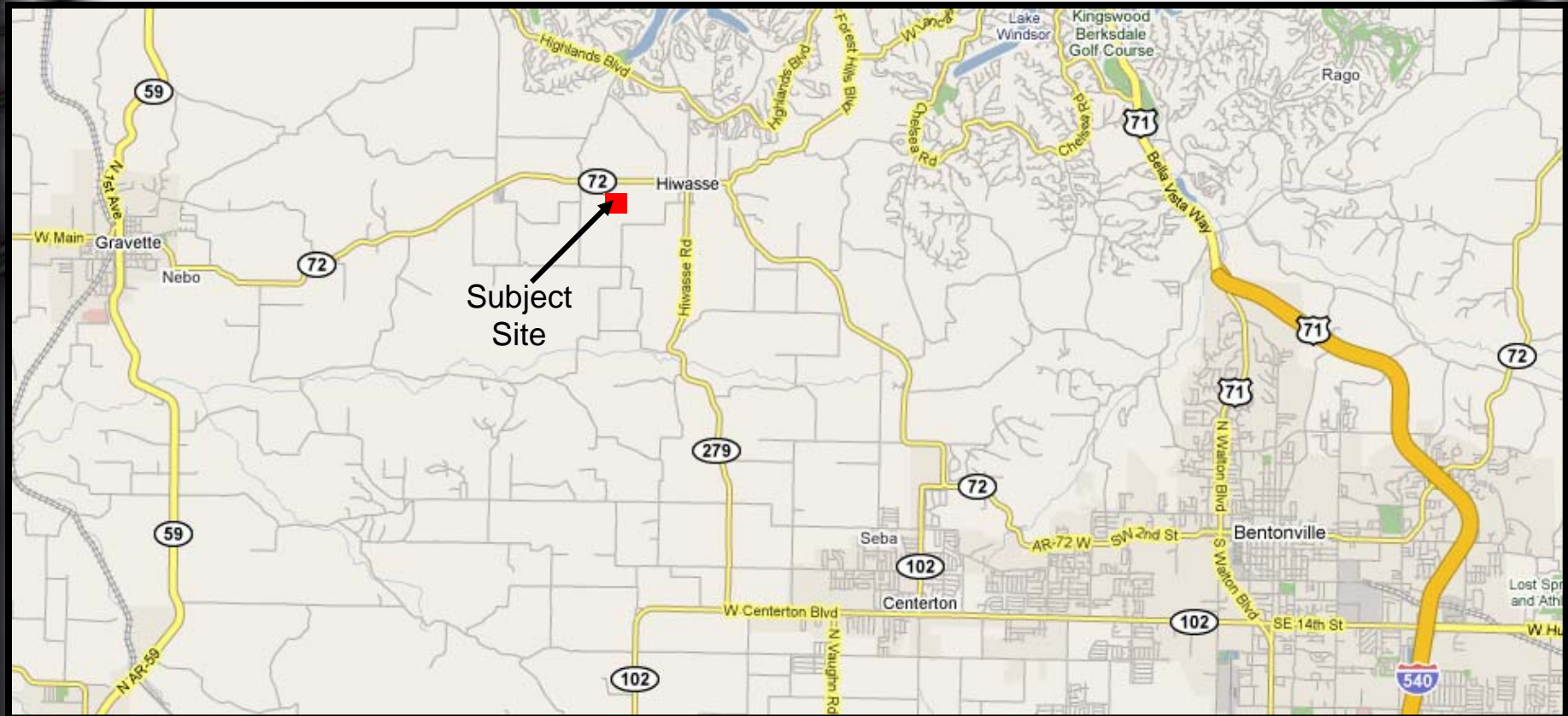


**Bill McClard, CCIM, SIOR**  
Lindsey & Associates, Inc.  
Commercial/Industrial Division  
3801 W. Walnut  
Rogers, Arkansas 72756  
(479) 246-1670 or 800-658-4012 Ext. 5670  
Website: [www.BillMcClard.com](http://www.BillMcClard.com)



All information contained herein given by sources deemed reliable. We do not however guarantee its accuracy.

## AREA MAP



## BUILDINGS ON PROPERTY



(no value)