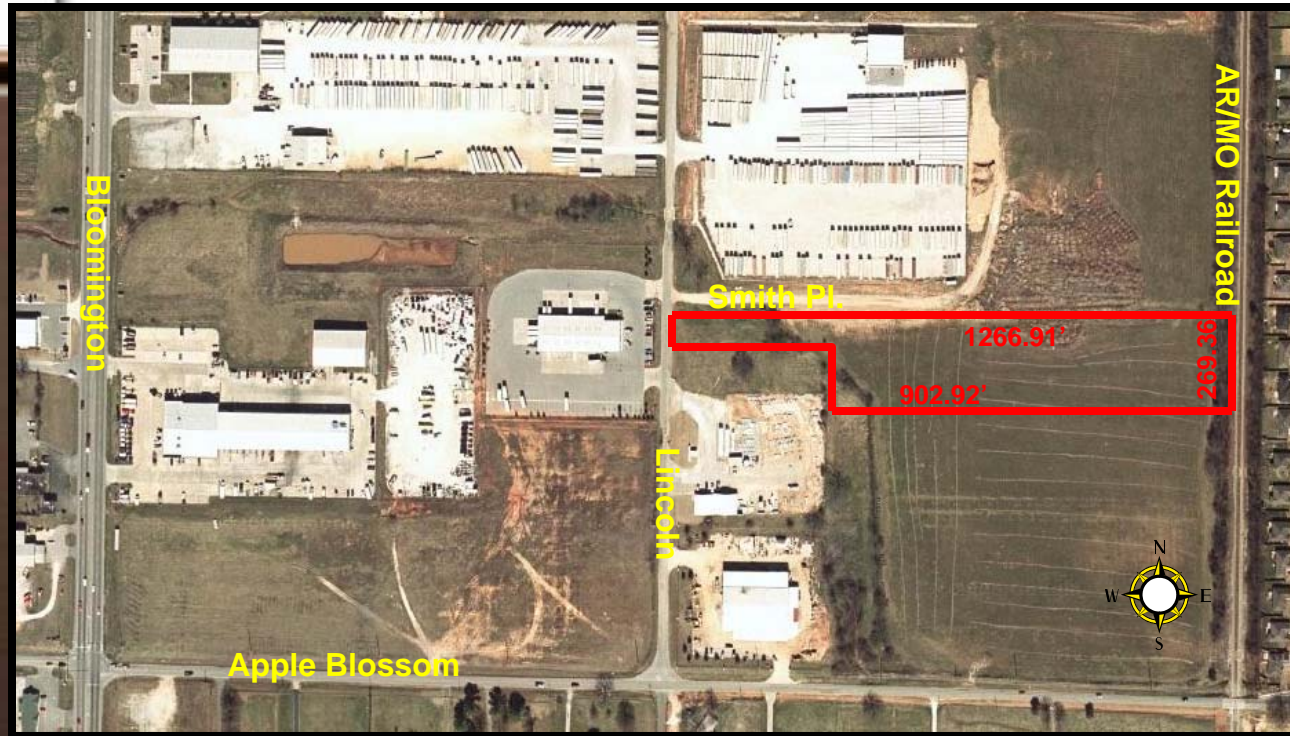


FOR SALE

**725 S. Lincoln (6+/- AC)
Lowell**

\$390,000*



6 ACRES +/-

- Zoned Light Industrial
- Only 2 miles to I-540
- Access off of Lincoln via private road
- Water along front/ Lincoln
- No municipal sewer (at this time)
- Centrally located
- Surrounded by development
- Topography is level

DIRECTIONS: From I-540, Exit 78, east Monroe (Hwy 264) - 3/4 mile, south Bloomington (71B) - 1 mile, east Apple Blossom - 1/4 mile, north Lincoln 1/10 mile, property located on east side of Lincoln access by Smith Place.

MLS# 556103

*Price approx. based on \$65,000 per acre pending exact square footage of survey.

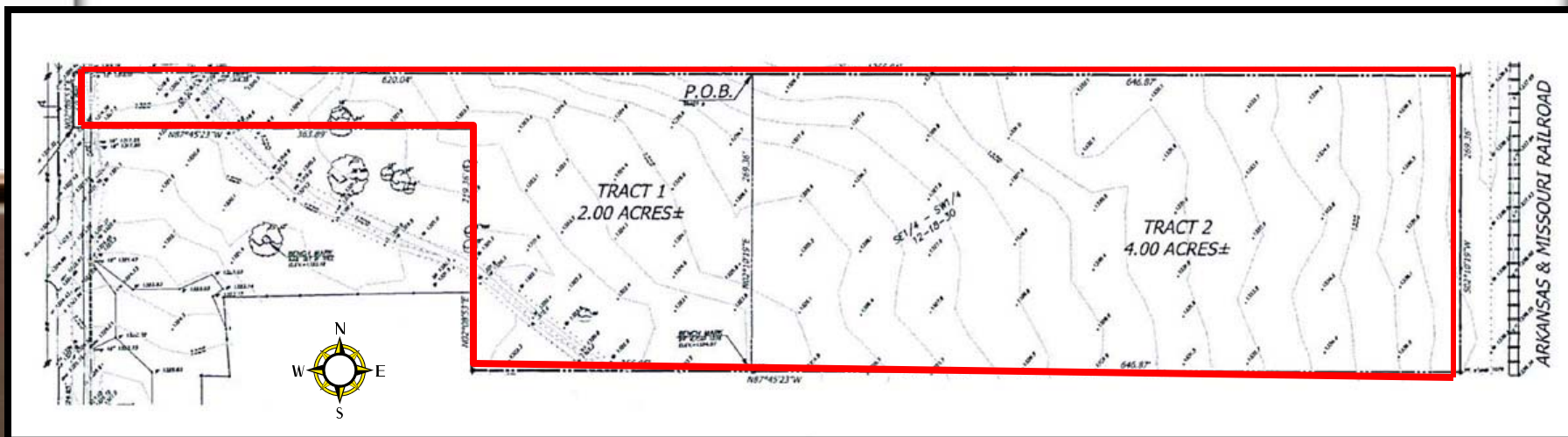


Bill McClard, CCIM, SIOR
Lindsey & Associates, Inc.
Commercial/Industrial Division
3801 W. Walnut
Rogers, Arkansas 72756
(479) 246-1670 or 800-658-4012 Ext. 5670
Website: www.BillMcClard.com
Email: bmcclard@lindsey.com



All information contained herein given by sources deemed reliable. We do not however guarantee its accuracy.

SURVEY MAP



AREA MAP

