

# FOR SALE 2607 E Mission

Fayetteville

# \$511,000



**.88 +/- ACRES**

- Zoned C-2
- 90.06' +/- frontage / Mission
- All city utilities available
- 2007 Traffic ct.: 13,000 (at intersection Mission / Crossover)
- Developing area
- Priced at \$13.33 psf
- Building holds no value
- Adjacent lot also available
  - 2..6 +/- acres (MLS# 544623)

**DIRECTIONS:** From 71B/College, east Township 1 ¾ miles, south – Crossover – ½ mile, west Mission – 2/10 mile, property on south side Just east of the new Metropolitan Bank.



**Bill McClard, CCIM, SIOR**

Lindsey & Associates, Inc.  
Commercial/Industrial Division  
3801 W. Walnut

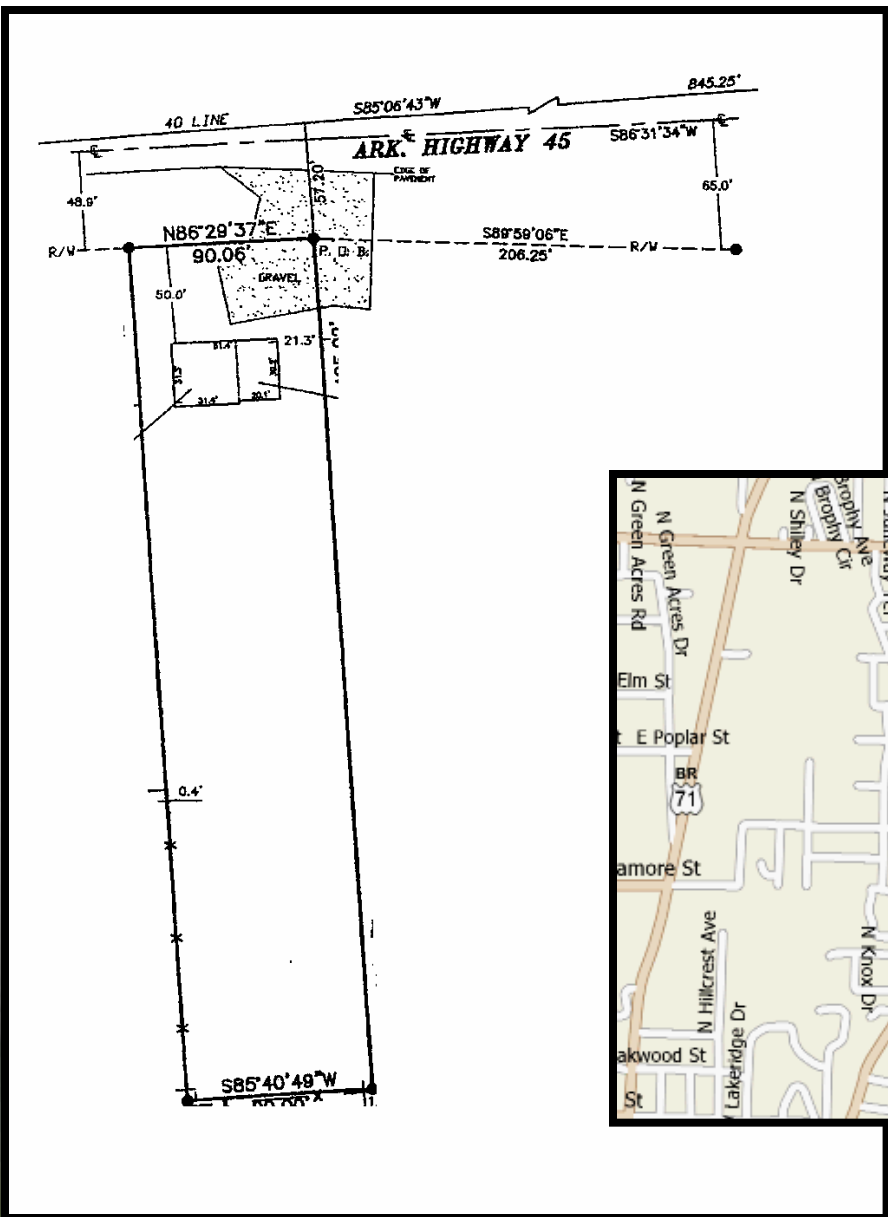
Rogers, Arkansas 72756  
(479) 246-1670 or 800-658-4012 Ext. 5670  
Website: [www.BillMcClard.com](http://www.BillMcClard.com)  
Email: [bmcclard@lindsey.com](mailto:bmcclard@lindsey.com)



MLS# 556107

All information contained herein given by sources deemed reliable. We do not however guarantee its accuracy.

# SURVEY



# AREA MAP

