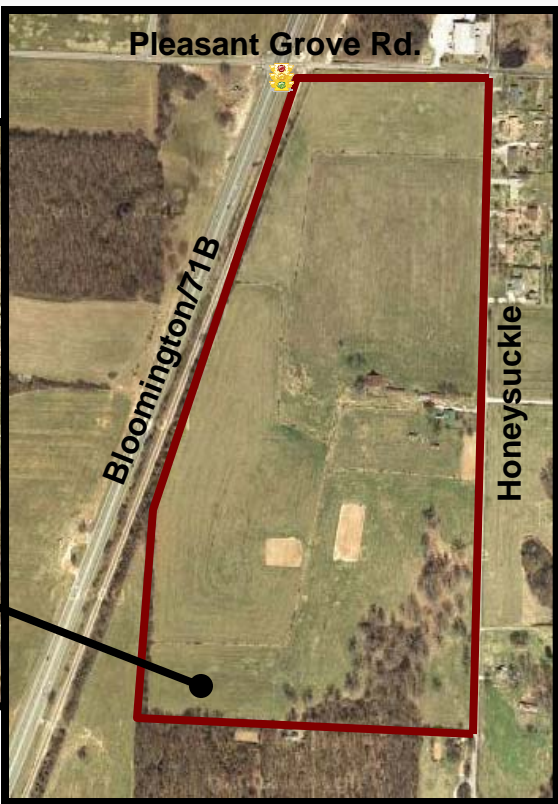


DEVELOPMENT OPPORTUNITY

FOR SALE 64.69 +/- ACRES, Pleasant Grove, Lowell
\$3,881,500



- 64.69 +/- ACRES
- 1807.24' frontage / Bloomington / 71B
- 684.04' +/- frontage / Pleasant Grove
- 2581.20' +/- frontage / Honeysuckle
- Mixed Zoning
- 47.13 +/- AC – Light Industrial (LI)
- 4.18 +/- AC – Residential Office (RO)
- 13.38 +/- AC – Neighborhood Office (NO)
- Only 1 1/2 miles to I-540
- Flat topography
- Ready to develop

PRICED AT \$1.38 PSF
or
\$60,000 per ACRE

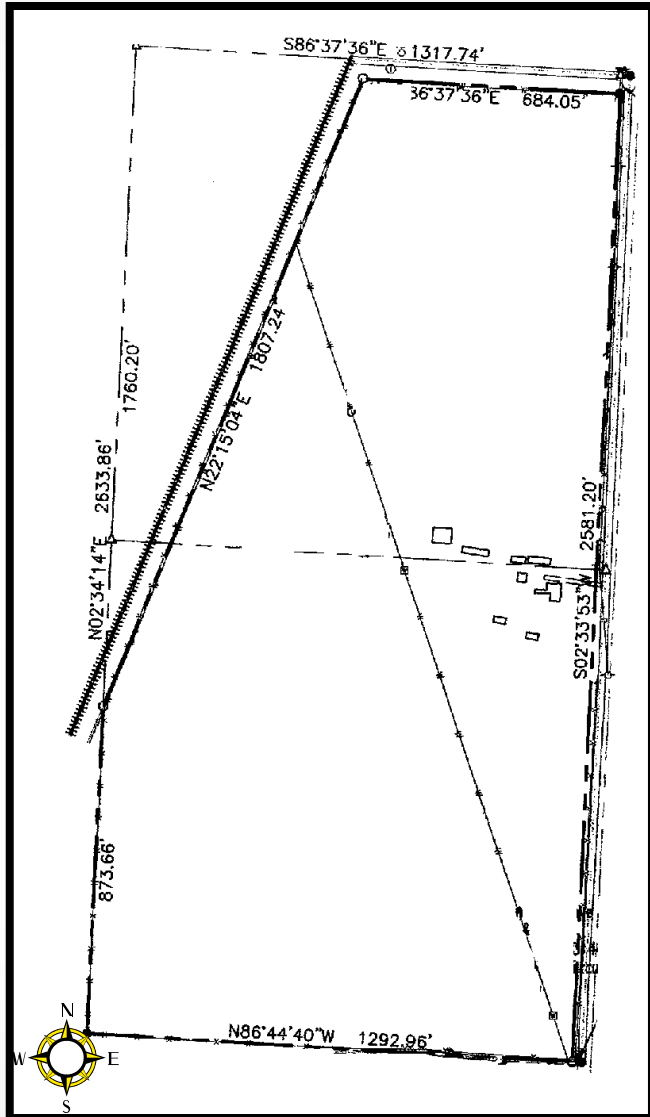


MLS# 587618

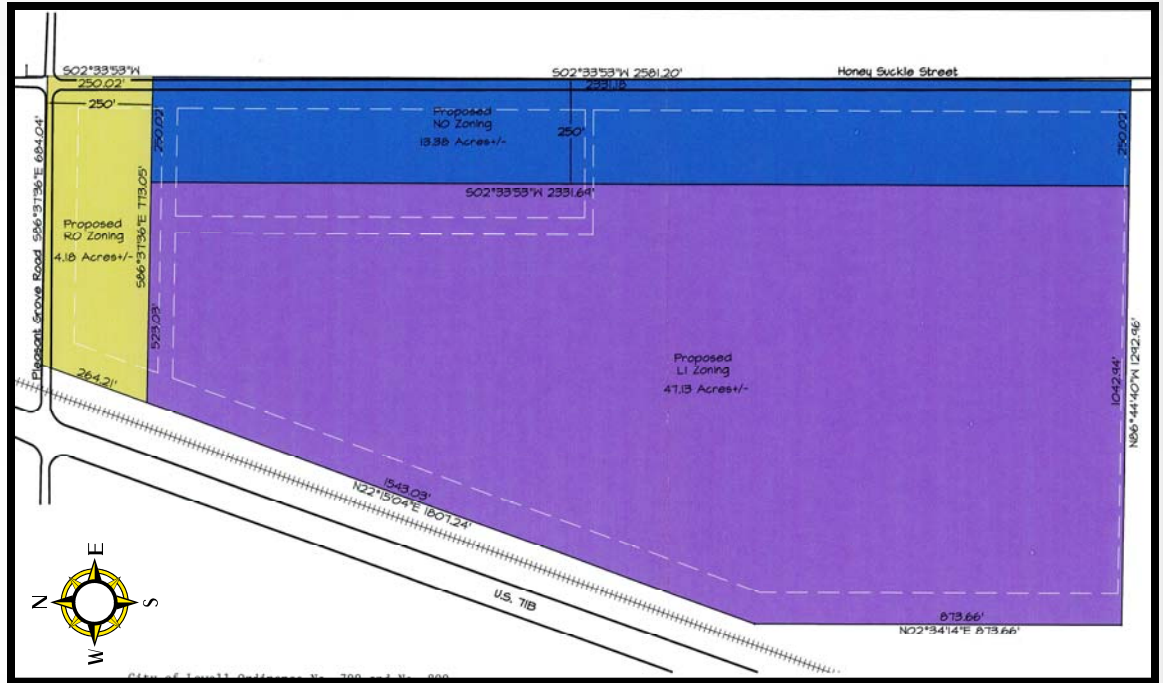
Bill McClard, CCIM, SIOR
Lindsey & Associates, Inc.
Commercial/Industrial Division
3801 W. Walnut
Rogers, Arkansas 72756
(479) 246-1670 or 800-658-4012 Ext. 5670
Website: www.BillMcClard.com



SURVEY MAP



ZONING MAP



AREA MAP

