

FOR LEASE - \$10.00 PSF/ANNUALLY 1305 SE 8th, Ste. 1, Bentonville



\$5,000 MONTHLY

- **6000** +/- SF available
3600 +/- SF open space
(18' sidewalls)
- Lobby area, game rooms, large break room area
- Climate controlled
- Ample parking
- Adjacent 7000 +/- SF also available
- Tenant pays utilities and CAM
- Landlord pays taxes and insurance

MLS# 590147



Bill McClard, CCIM, SIOR

Lindsey & Associates, Inc.

Commercial/Industrial Division

3801 W. Walnut

Rogers, Arkansas 72756

(479) 246-1670 or 800-658-4012 Ext. 5670

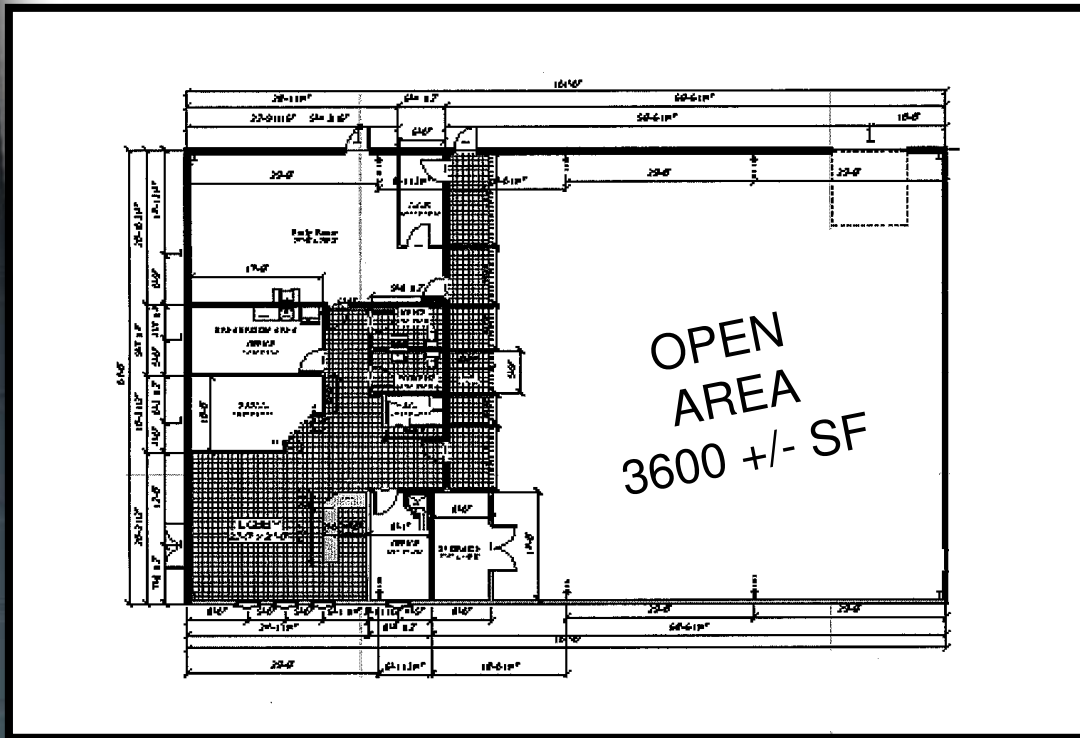
Website: www.BillMcClard.com



Directions: From I-540, Exit 86 (Hudson/Hwy102) west one mile, north on J Street, 1/4 mile, property located on the northeast corner of 8th and J Street. Located approximately one mile from Wal-Mart Headquarters and Wal-Mart ISD Facility, adjacent to Wal-Mart lay-out Building.

All information contained herein given by sources deemed reliable. We do not however guarantee its accuracy.

FLOOR PLAN



AREA MAP

