

**FOR  
SALE**

**811 N. Bloomington, Lowell**

~~\$1,200,000~~

**PRICE REDUCED TO \$1,050,000**



- 9208 +/- SF Building
- 5872 +/- SF warehouse
- 3336 +/- SF office / showroom
- Zoned Commercial
- Situated on 1.21 +/- acres
- 140' +/- frontage / Bloomington
- 4 drive-in doors
- 2 - 14' & 2 - 12' door heights
- Ample paved parking
- 2007 traffic ct: 24,000
- Approx. 2 miles to I-540

DIRECTIONS: From intersection of Hwy 264 / Monroe and Hwy 71B / Bloomington, north approx. one mile. Property located on the east side of Bloomington, just south of Kimberly Plaza..



Owner currently occupies property and is willing to lease back.



**Bill McClard, CCIM, SIOR**  
Lindsey & Associates, Inc.  
Commercial/Industrial Division  
3801 W. Walnut  
Rogers, Arkansas 72756  
(479) 246-1670 or 800-658-4012 Ext. 5670  
Website: [www.BillMcClard.com](http://www.BillMcClard.com)  
Email: [bmccclard@lindsey.com](mailto:bmccclard@lindsey.com)



**MLS# 590853**

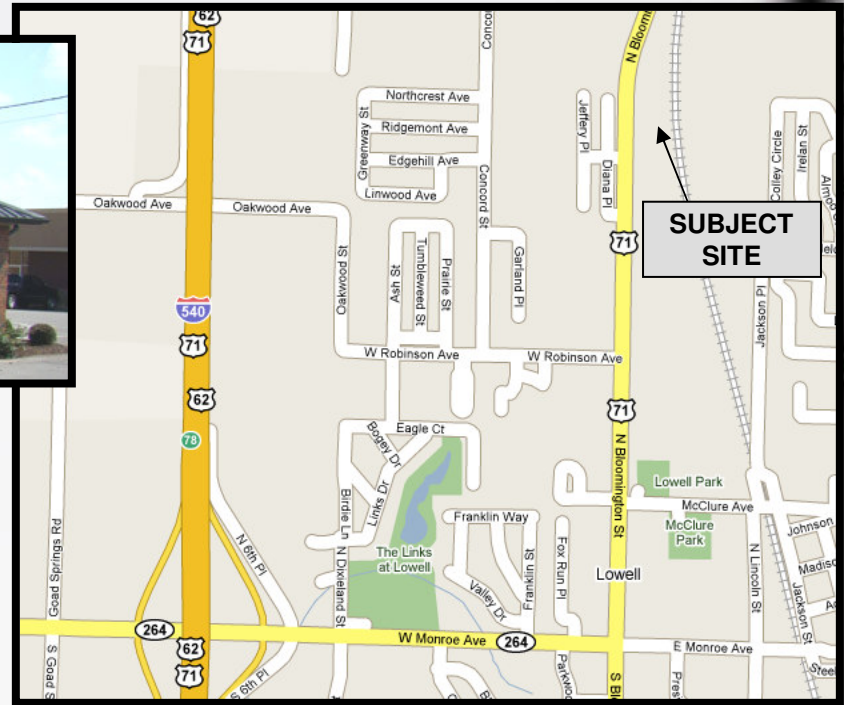


All information contained herein given by sources deemed reliable. We do not however guarantee its accuracy.

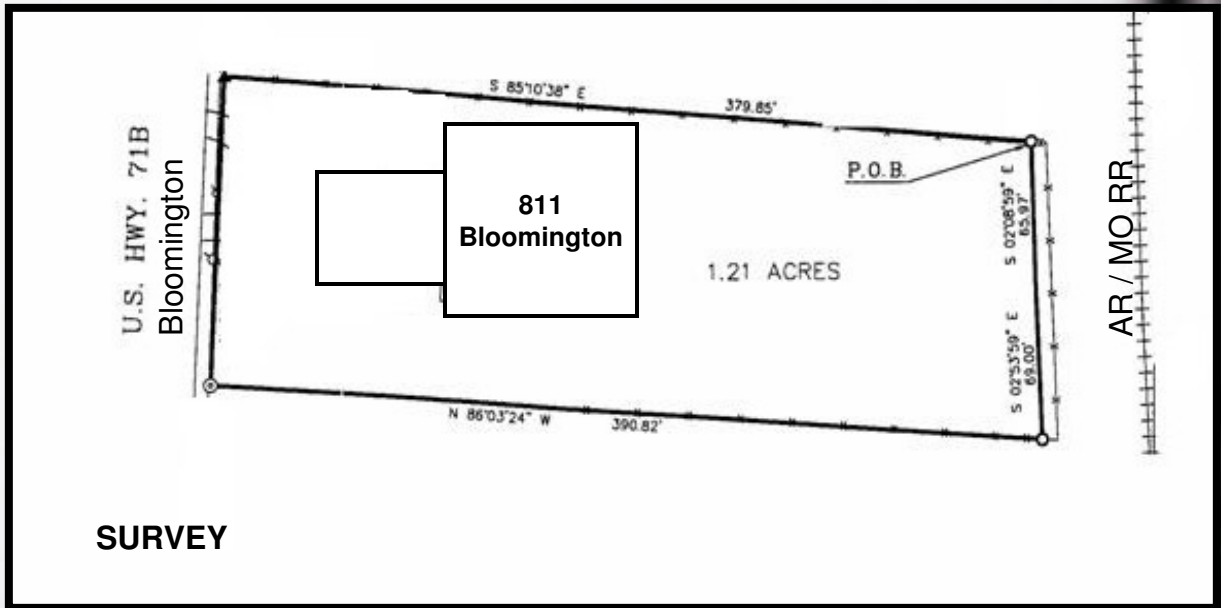
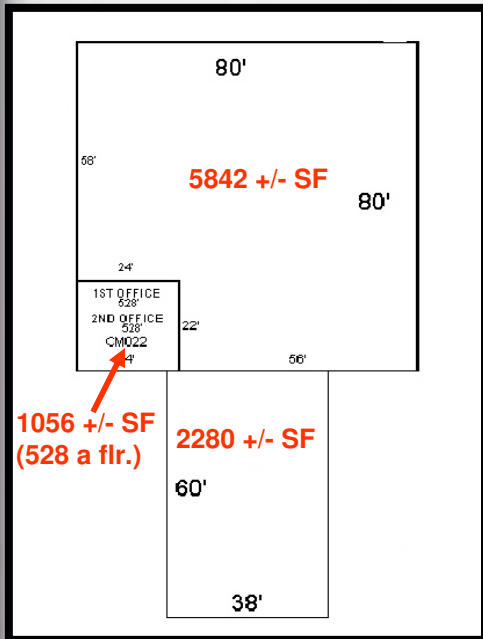
**EXTERIOR PICTURE**



**AREA MAP**



**BUILDING LAYOUT**



**SURVEY**