

FOR SALE or LEASE

\$345,000 or \$8.00 PSF/NNN

1003 SE 28th St.
Bentonville



- 3460 +/- SF building
- Situated on .78 +/- AC
- Zoned R-0
- Entry area
- 3 large rooms
- 4 - offices
- Extra area for cubicles
- 3 restrooms
- 138.1' +/- frontage/SE 28th
- 2008 traffic ct. : 11,000
- Adjacent to Oak Trace Center
- Only 1 1/2 miles to I-540

DIRECTIONS: From Exit 85 west on Walton – 3/4 mile, north SE J – 1/2 mile, east on SE 28th Street- 110 yards, property on north side adjacent to Oak Trace Business Center.

MLS# 591120 (SALE)
MLS# 591126 (LEASE)



Bill McClard, CCIM, SIOR

Lindsey & Associates, Inc.
Commercial/Industrial Division
3801 W. Walnut

Rogers, Arkansas 72756

(479) 246-1670 or 800-658-4012 Ext. 5670

Website: www.BillMcClard.com

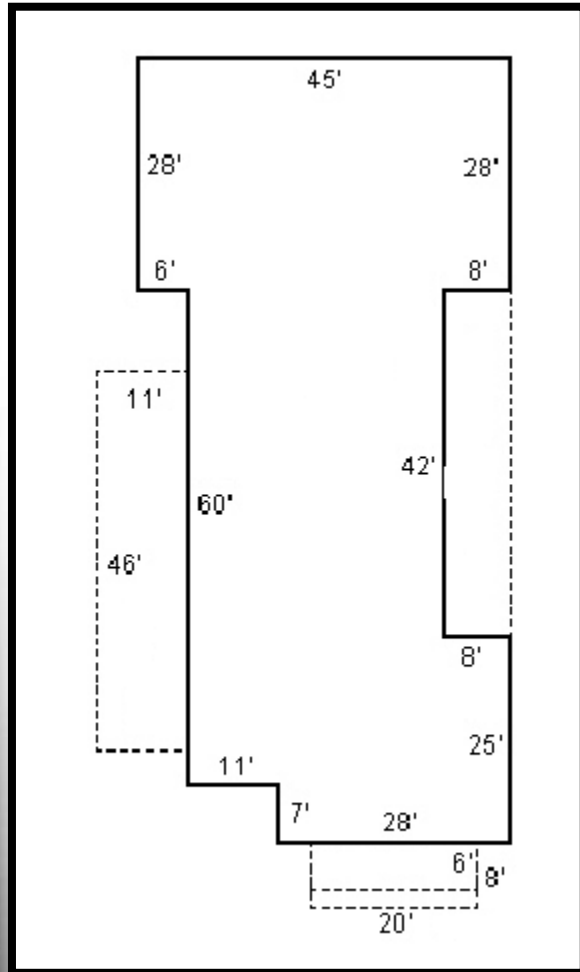


CCIM



All information contained herein given by sources deemed reliable. We do not however guarantee its accuracy.

BUILDING LAYOUT



AREA MAP

