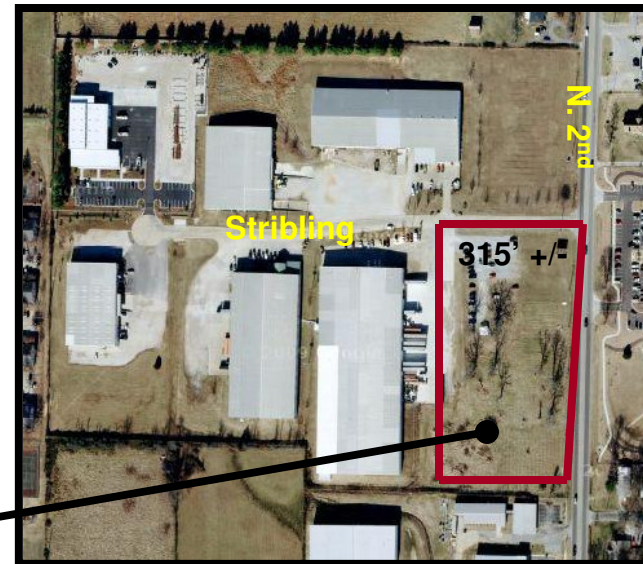
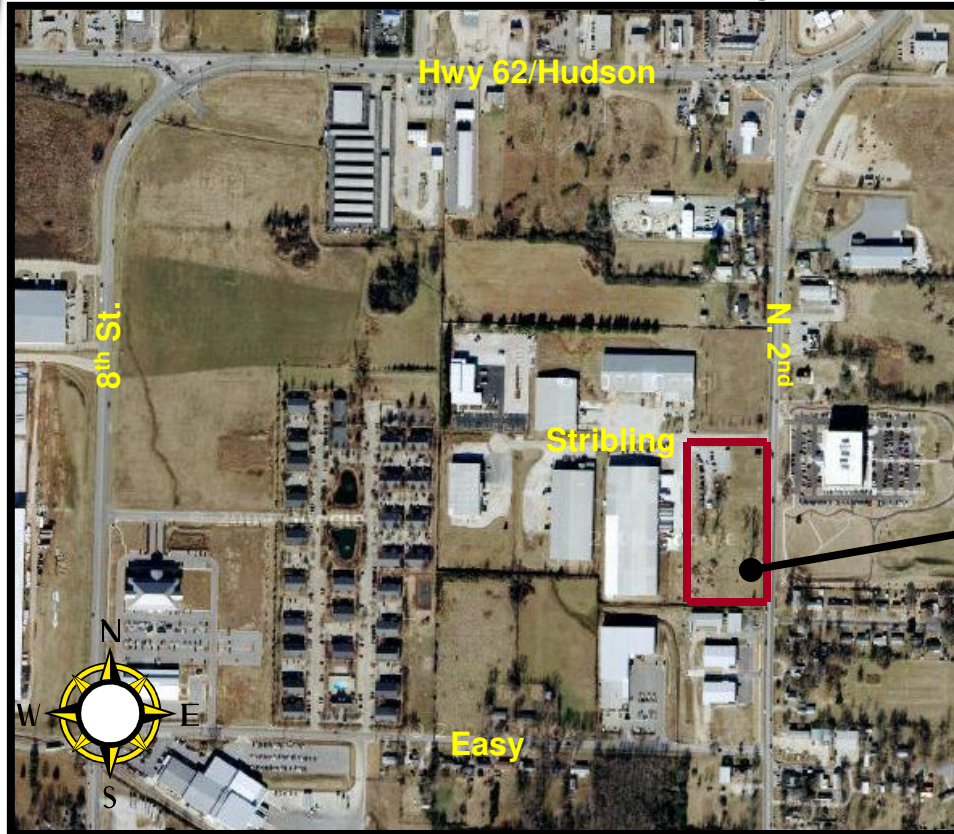


# FOR SALE

## 4.51 +/- AC

Stribling Dr. / N. 2<sup>nd</sup> St., Rogers

## \$980,000



- **4.51** +/- ACRES
- Located on a corner lot
- Zoned I-1
- 315' +/- frontage / Stribling Drive
- All city utilities
- Flat and ready to develop
- Priced at only **\$5.00** per SF



MLX# 592670

**Bill McClard, CCIM, SIOR**

Lindsey & Associates, Inc.

Commercial/Industrial Division

3801 W. Walnut

Rogers, Arkansas 72756

(479) 246-1670 or 800-658-4012 Ext. 5670

Website: [www.BillMcClard.com](http://www.BillMcClard.com)

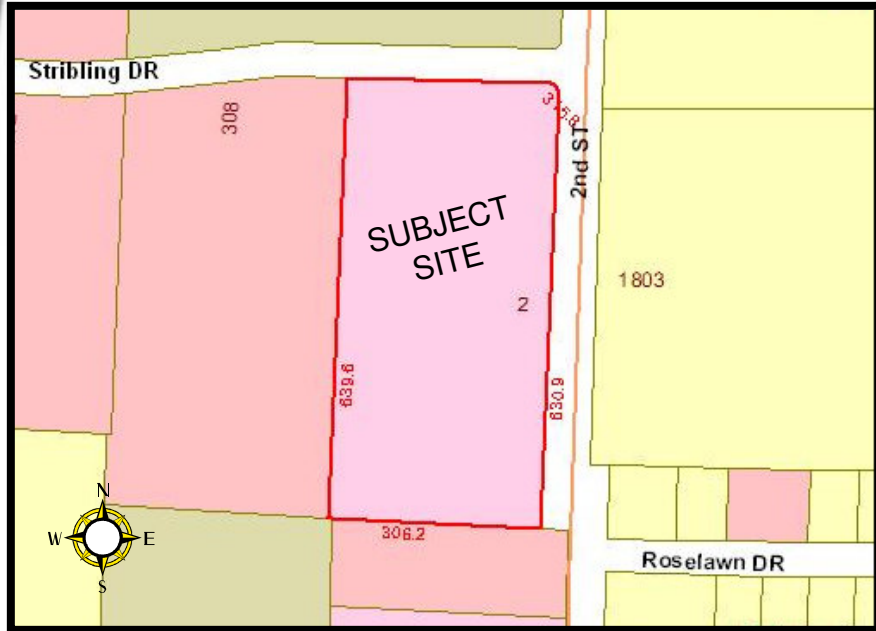
Email: [bmcclard@lindsey.com](mailto:bmcclard@lindsey.com)



**DIRECTIONS:** From intersection of N. 2<sup>nd</sup> St. (Hwy 94) and Hudson (Hwy 62) –south ¼ mile, west Stribling - Property is located on southwest corner of N. 2<sup>nd</sup> and Stribling Drive.

All information contained herein given by sources deemed reliable. We do not however guarantee its accuracy.

### PARCEL MAP



### AREA MAP

