

FOR SALE

Southern Hills Court Lots, Rogers

LOT 19 - \$207,350

1.12 +/- AC

LOT 20 - \$270,300

1.46 +/- AC

- 2 LOTS
- Zoned C-2
- Located in cul-de-sac
- Visibility from I-540
- All city utilities available
- Ready for development
- Growing area
- Priced at only

\$4.25 PSF



ML# 618714 (LOT 19) , ML# 619402 (LOT 20)

DIRECTIONS: From I-540 Exit 81 head west on W. Pleasant Grove Rd - ¼ mile, north on Southern Hills Blvd. - ¼ mile, west Southern Hills Ct. - lot at end of cul-de-sac.



Bill McClard, CCIM, SIOR

Lindsey & Associates, Inc.

Commercial/Industrial Division

3801 W. Walnut

Rogers, Arkansas 72756

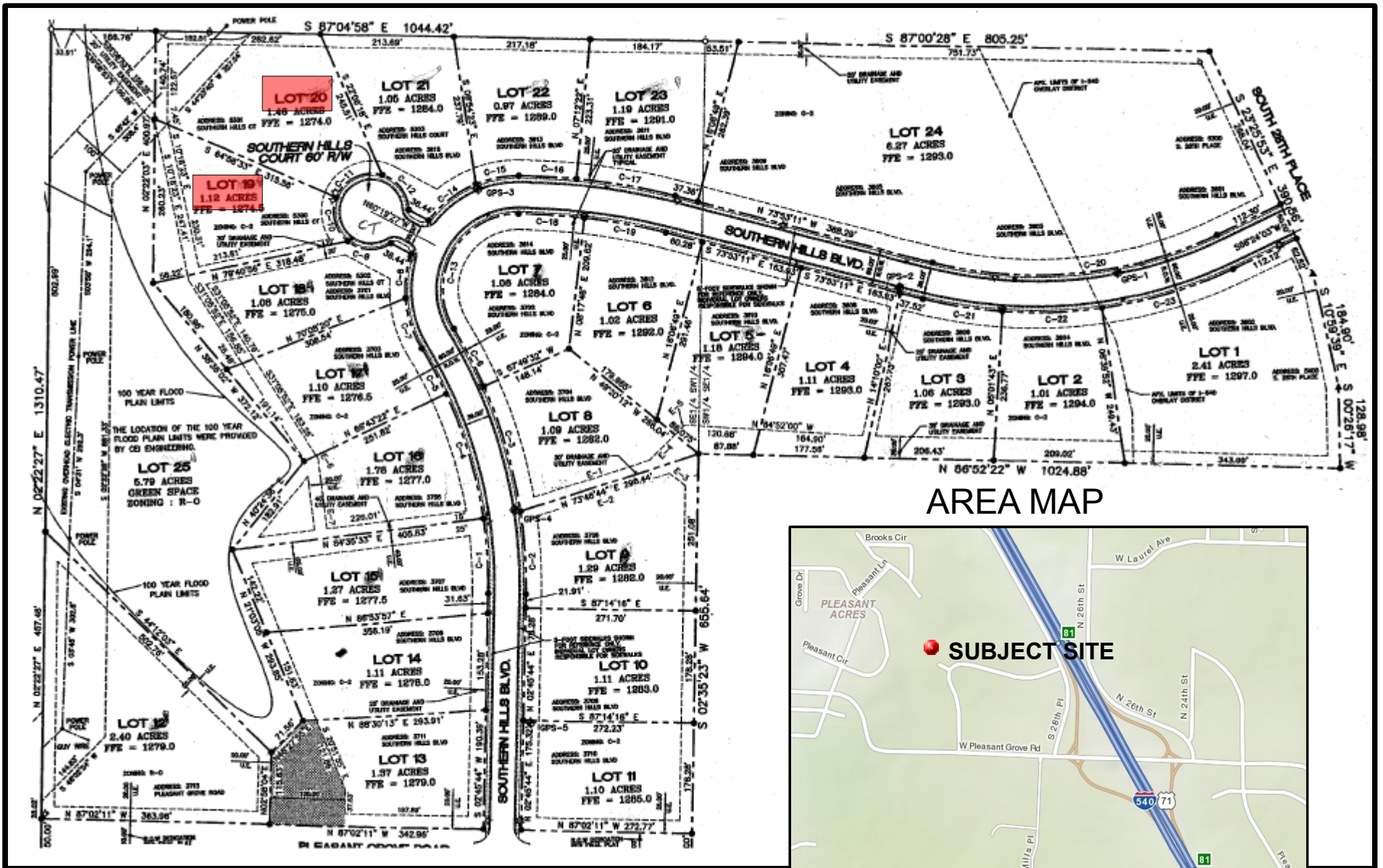
(479) 246-1670 or 800-658-4012 Ext.5670

Website: www.BillMcClard.com



All information contained herein given by sources deemed reliable. We do not however guarantee its accuracy.

SURVEY MAP



AREA MAP

